

INTRODUCTION TO RAINWISE



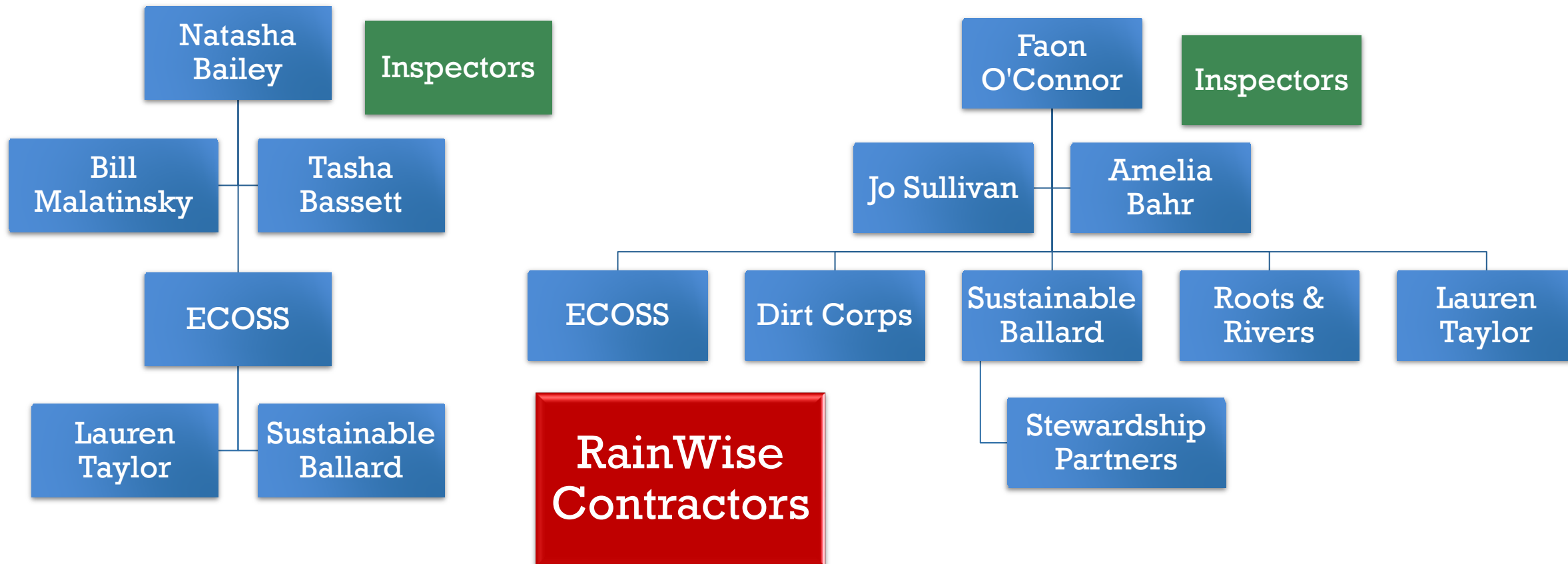
Natasha Bailey
Seattle Public Utilities
RainWise Program Manager



RAINWISE TEAM



King County

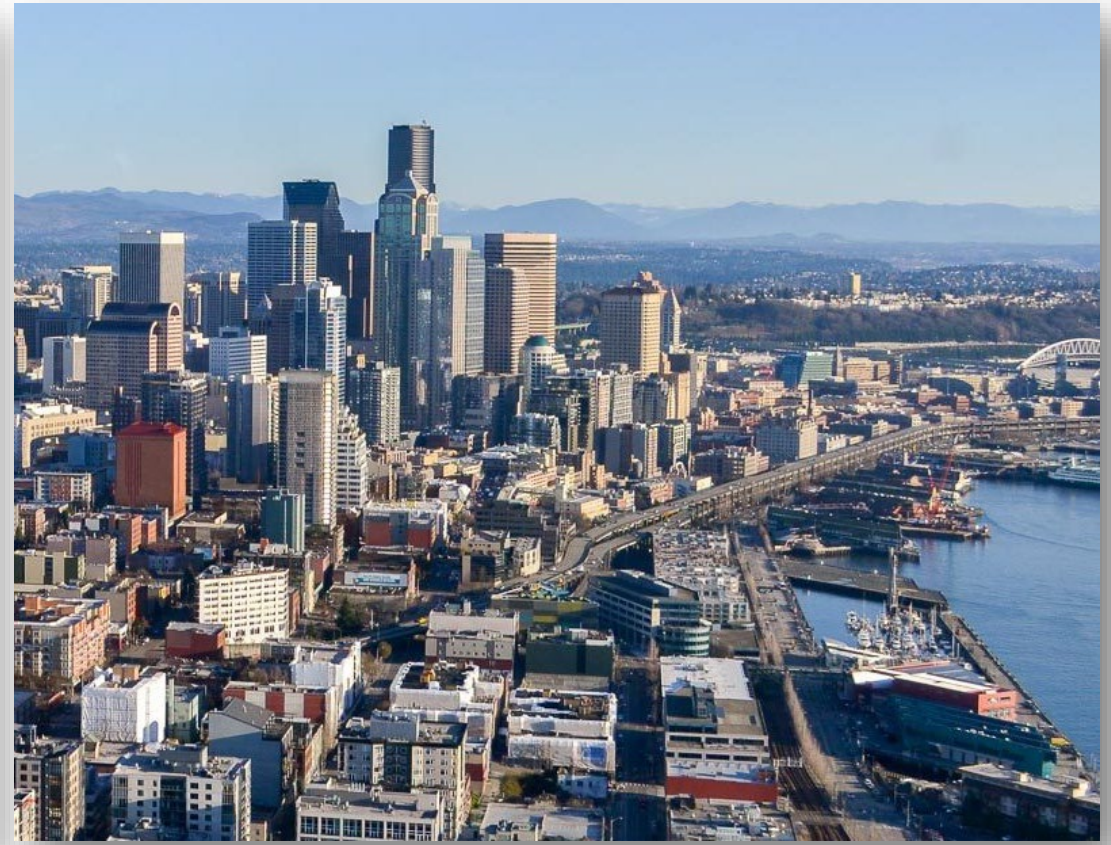


WHAT IS RAINWISE ?

RainWise is a rebate program that helps property owners assist the city in managing rainwater that falls on their roofs through the installation of rain gardens and cisterns, helping to prevent sewer and stormwater overflow events.



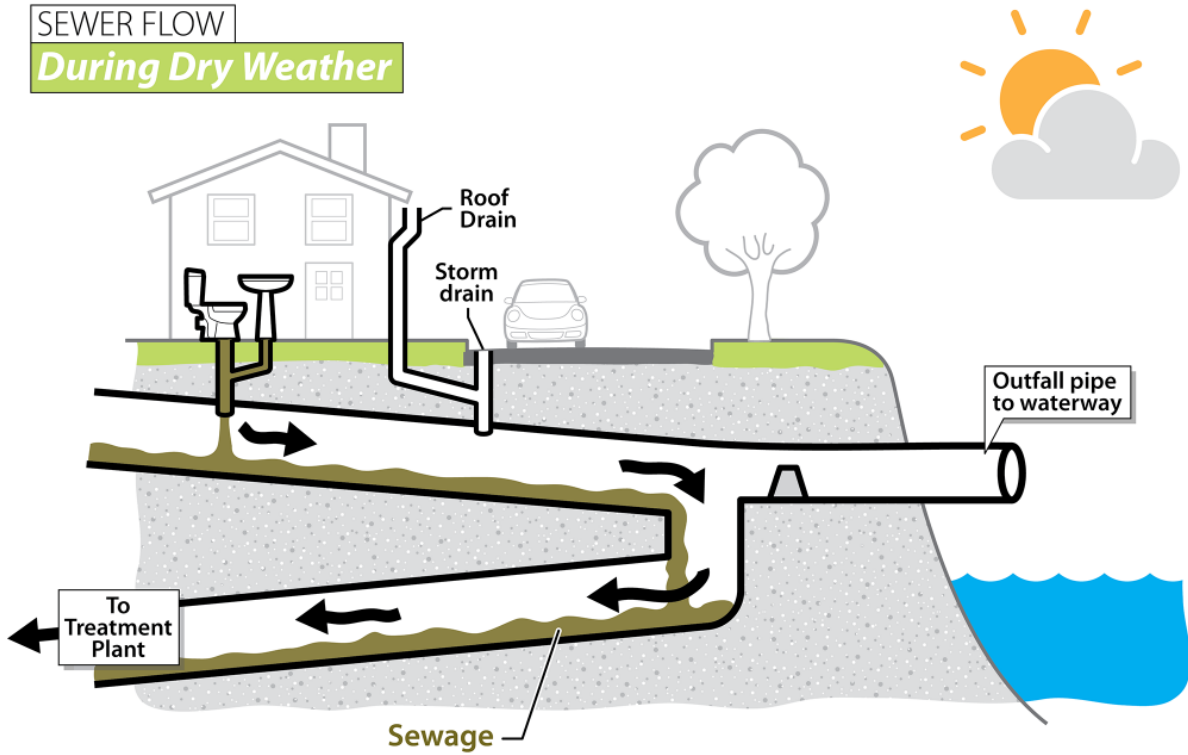
BEFORE SEATTLE.....AND TODAY



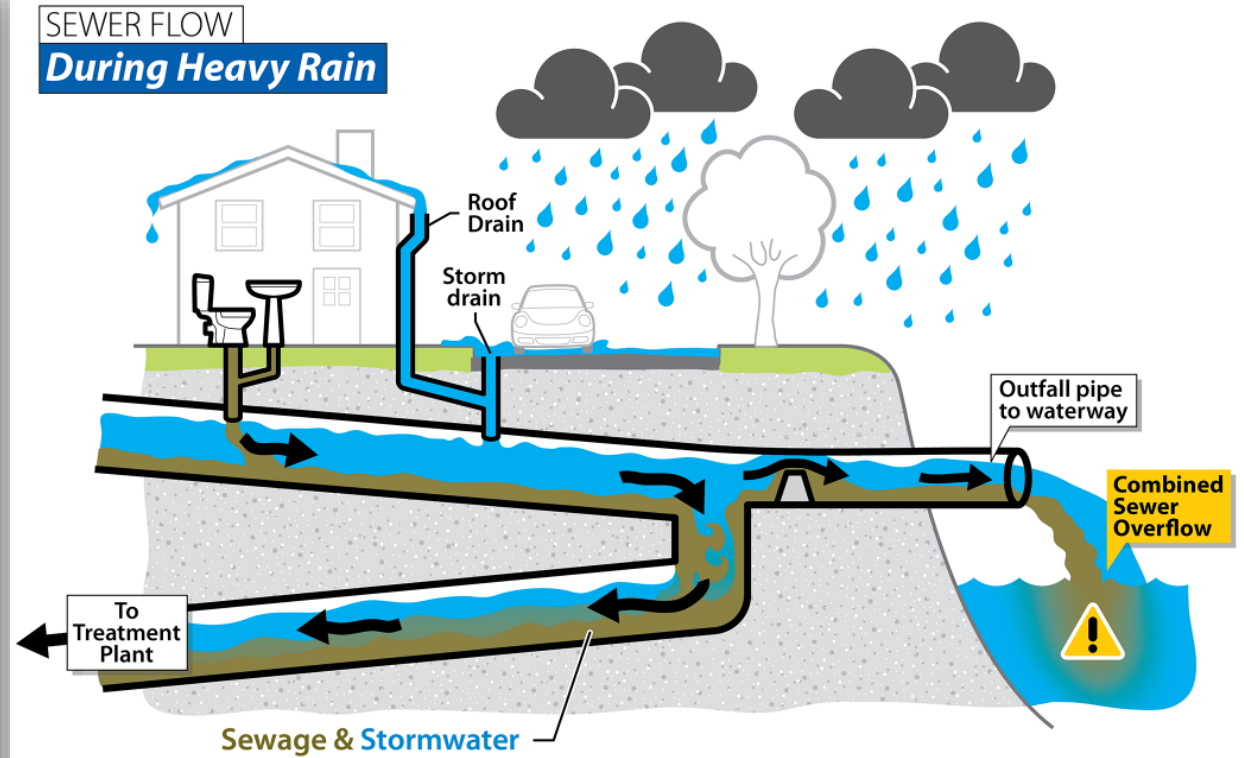
HOW OUR SYSTEM WORKS

COMBINED SEWER OVERFLOWS (CSO)

SEWER FLOW
During Dry Weather

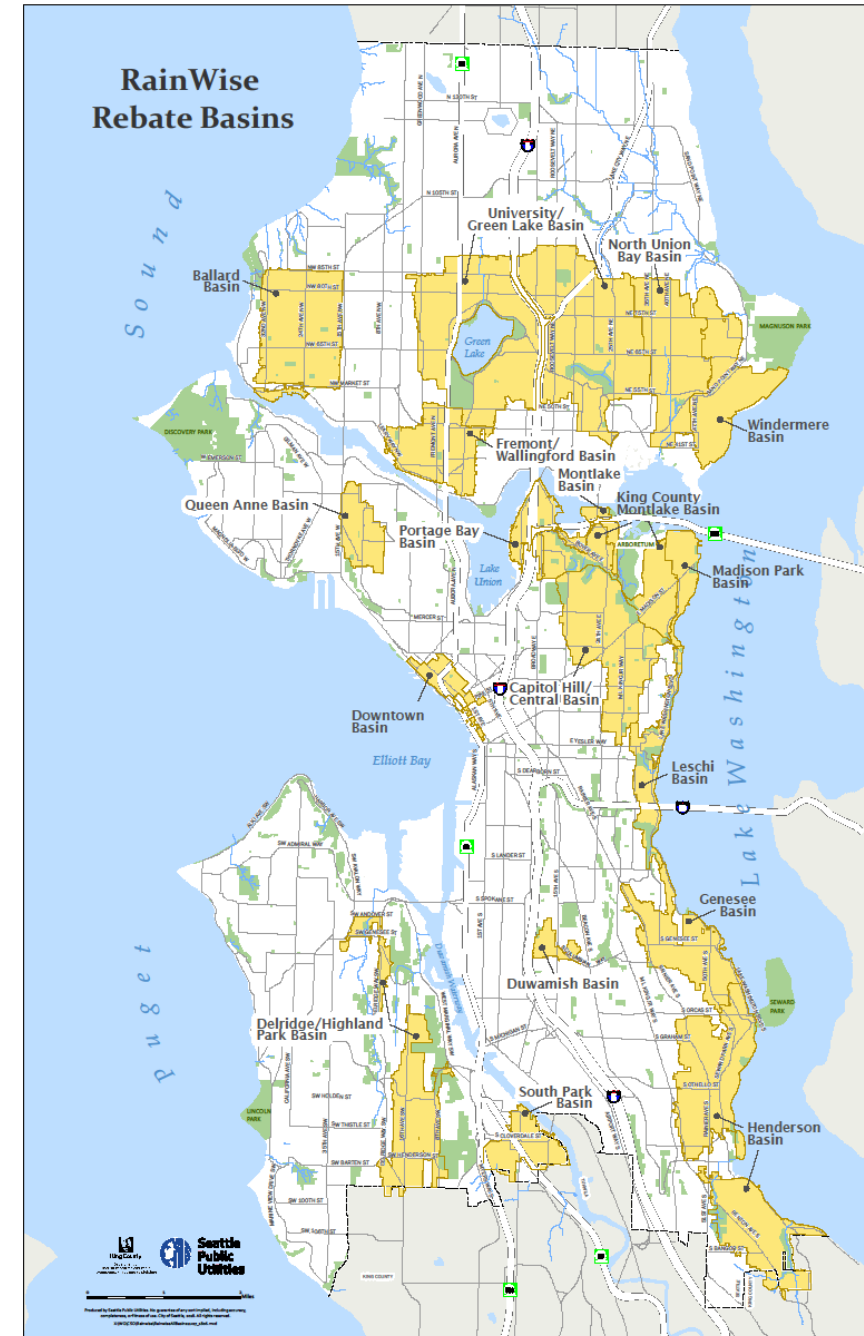


SEWER FLOW
During Heavy Rain



RAINWISE REBATE AREAS

1. Over 2200 RainWise installations to date.
2. Control the rain that falls on the equivalent of 55 acres of rooftop.
3. Keeps about 28 million gallons of rain out of the sewer system every year.
4. New areas may continue to be added.



STEPS TO GET RAINWISE

1. Verify your property's eligibility:
<https://700milliongallons.org/rainwise/eligibility/>
2. Select a RainWise-approved contractor, and agree on the project plan
3. Contractor does the work (They'll also schedule a RainWise Pre-Inspection and Post-Inspection)
4. Contractor or homeowner submits rebate paperwork and receives rebate
5. Maintain your system



TAKE AWAY

- 💧 RainWise is part of the solution to manage stormwater and reduce CSOs
- 💧 RainWise is offered to CSO basins & is for private property retrofits
- 💧 First stop for questions is: www.rainwise.seattle.gov or 700milliongallons.org/rainwise
- 💧 We are here to help & want you to succeed.



INTRODUCTION TO RAINWISE



Natasha Bailey

Natasha.Bailey@seattle.gov

206.586.2297

Q&A