

# Be **RainWise** rebates for rain gardens & cisterns

## Central Seattle

Do your part to protect Puget Sound



Seattle  
Public  
Utilities



King County



**Preventing polluted runoff is the key action to protect our waterways.**

**Be part of the solution!** By slowing and cleaning runoff on your property, you are positively impacting the whole system. Rain gardens and cisterns on your property are a great way to start. One residential rain garden can divert 70% to 100% of the rain runoff from a property.

**W**ith every storm, rain carries pollutants off our roofs, driveways and other hard surfaces to local creeks, Lake Washington and Puget Sound. During big storms, the sheer volume of this “stormwater” can cause sewer overflows, and erode hillsides and stream banks. RainWise rain gardens and cisterns can manage this runoff with your help.

**RainWise** is a rebate program that helps eligible\* property owners manage stormwater by installing rain gardens and/or cisterns on private property. This prevents flooding, adds attractive landscaping, and can provide water for summer irrigation.

- Over 2,000 projects completed in Seattle
- Project cost can be covered up to 100%
- Average residential rebate amount is \$4,400



### **Get RainWise with your neighbors!**

*When you and your neighbors choose the same contractor, the process can be more cost-effective for everyone....and more stormwater will be managed on site. Win-win! Contact us and we will help you organize a “cluster” project.*

### **What your neighbors are saying about RainWise:**



*“People walk by all the time and comment on our rain garden. It’s wonderful to know that they also are helping Puget Sound – a win-win.”*



*“I am thrilled to be a part of Seattle’s RainWise program and doing what I can to help our Sound.”*



*“With my cisterns, I can use the water in my garden during the summer and help manage stormwater in the winter!”*

**RainWise**



\*To receive a rebate, you must live in an eligible combined sewer overflow (CSO) basin.

Rebate varies from \$3-4 per square foot of roof area captured, with a minimum of 400 square feet required for the rebate.



Cistern, rain garden or both...

# How will you be RainWise?

## How does a RainWise **cistern** work?



A **cistern** is a large, above-ground container used to collect roof water. It is like a huge rain barrel and can hold 200 or more gallons. During the winter, RainWise cisterns collect rain and slowly release it to the sewer system. In the summer, the water can be collected and used for watering.



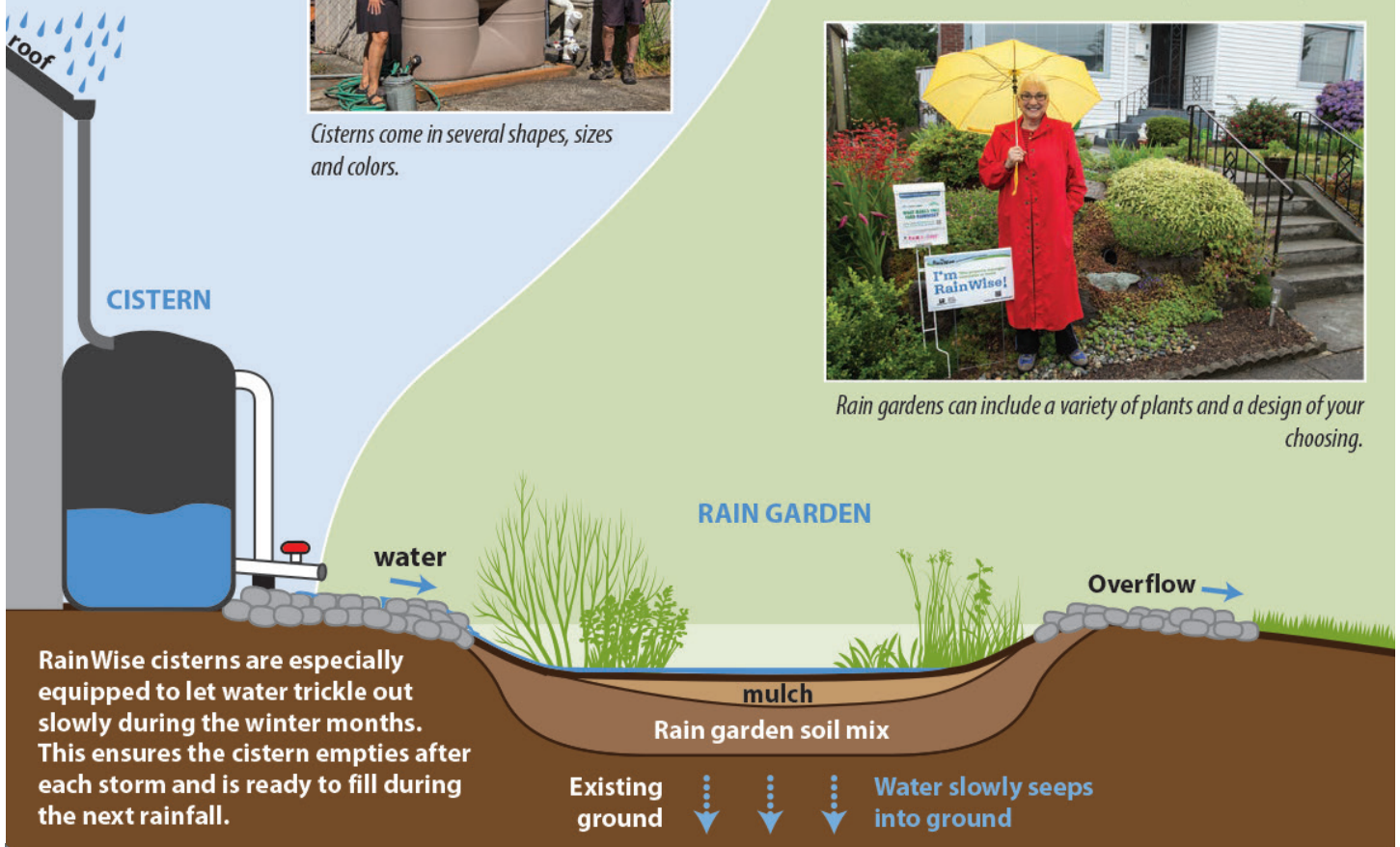
Cisterns come in several shapes, sizes and colors.

## How do RainWise **rain gardens** work?

A **rain garden** is a shallow depression containing spongy soil and a variety of plants. It collects water from your roof downspout and allows it to slowly soak into the ground. The soil and plants act as a natural filter, cleaning the water before it enters the ground or a nearby waterway.



Rain gardens can include a variety of plants and a design of your choosing.



### FAQ

#### How much will my rebate be?

Your rebate will be based on the square footage of roof area being managed. A consultation with a contractor will include an estimate of the rebate amount and a discussion of options available for your property. Your final cost (if any) will be the total project cost, minus the rebate amount. RainWise rebates cover 60-100% of project costs and are taxable under federal law.

RainWise

Seattle  
Public  
Utilities  
King County

For more information, visit [rainwise.seattle.gov](http://rainwise.seattle.gov). Contact us at [rainwise@seattle.gov](mailto:rainwise@seattle.gov).

## Steps to becoming RainWise:

1. **Check eligibility:**  
Use our eligibility map at [rainwise.seattle.gov](http://rainwise.seattle.gov).
2. **Contact contractors\*\*:**  
Choose contractors from the list we've provided to the right.
3. **Your contractor will handle pre-inspection, build, and post-inspection.**
4. **Get your rebate!**  
Submit your rebate package and receive your rebate within 6-8 weeks.

Visit

[700milliongallons.org/rainwise](http://700milliongallons.org/rainwise)

for tips on maintenance, resources and more!



King County



Seattle Public Utilities

### FAQ

#### How do I choose a contractor?

It's kind of like choosing a roofer or plumber – who do you want to work with? Check their websites and references, get suggestions from neighbors, have a consultation with more than one and see whose ideas and pricing fit best for you. These contractors went through our RainWise Orientation, and are licensed, bonded and insured. Please evaluate them on their experience.

### KEY

#### Types of installations offered:

- = rain gardens
- = rain gardens + cisterns
- = cisterns
- ❖ = can do hardscape and/or construction
- S = Habla Español
- V = Nói Tiếng Việt
- C = 说广东话
- M = 说普通话

Having trouble connecting with a contractor? Email [rainwise@seattle.gov](mailto:rainwise@seattle.gov), and we can help!

## Central Seattle RainWise Contractors

### Arnica Landscape and Design

(206) 302-8940  
[arnicalandscapedesign@gmail.com](mailto:arnicalandscapedesign@gmail.com)



### Ballard RainWater Systems

(206) 931-6345  
[robertbeckerjr@aol.com](mailto:robertbeckerjr@aol.com)



### Bristow Enterprises

(206) 841-1964  
[jameseb63@gmail.com](mailto:jameseb63@gmail.com)



### Dirt Corps

(206) 250-9285; (206) 234-5102  
[info@thedirtcorps.com](mailto:info@thedirtcorps.com)  
[www.thedirtcorps.com](http://www.thedirtcorps.com)



### Eco-Restore Ecological Consulting & Design

(360) 350-6625  
[consult@eco-restore.com](mailto:consult@eco-restore.com)  
[www.eco-restore.com](http://www.eco-restore.com)



### Green Earthworks Construction, Inc.

(253) 225-1106  
[sean@gecnw.com](mailto:sean@gecnw.com)  
[www.gecnw.com](http://www.gecnw.com)



### Headwaters Landworks

(425) 802-7221  
[headwaterslandworks@gmail.com](mailto:headwaterslandworks@gmail.com)



### HomeGrown Organics

(206) 498-8785  
[hello@hg-organics.com](mailto:hello@hg-organics.com)  
[www.hg-organics.com](http://www.hg-organics.com)



### Justin's Landscaping

(206) 390-1463  
[Jhowell360@yahoo.com](mailto:Jhowell360@yahoo.com)  
[justinslandscaping.business.site](http://justinslandscaping.business.site)



### Kaleidoscope Landscaping

(206) 533-1122  
[info@kaleidoscopeinc.net](mailto:info@kaleidoscopeinc.net)  
[www.kaleidoscopeinc.net](http://www.kaleidoscopeinc.net)



### Kat with a K Landscaping

(206) 850-2609  
[katsraingardens@gmail.com](mailto:katsraingardens@gmail.com)  
[www.katslandscaping.com](http://www.katslandscaping.com)



### Lacewing Fine Gardening & Botanical Design

(206) 319-8659  
[britt@lacewingseattle.com](mailto:britt@lacewingseattle.com)



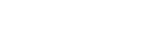
### Liang's Construction

(206) 501-0292  
[liangliangliangs@gmail.com](mailto:liangliangliangs@gmail.com)



### Lumo Landscape Design

(206) 349-7092  
[lumolandscape@gmail.com](mailto:lumolandscape@gmail.com)  
[www.lumolandscape.com](http://www.lumolandscape.com)



### Monsoon Rain Gardens

(206) 782-0418  
[info@monsoonraingardens.com](mailto:info@monsoonraingardens.com)  
[www.monsoonraingardens.com](http://www.monsoonraingardens.com)



### Plot.twist Coop

(425) 736-6943  
[plot.twistcoop@gmail.com](mailto:plot.twistcoop@gmail.com)  
[www.plottwistcoop.com](http://www.plottwistcoop.com)



### Product Water

(206) 450-0231  
[info@productwater.com](mailto:info@productwater.com)  
[www.productwater.com](http://www.productwater.com)



### Rain Dog Designs

(253) 459-3539  
[raindogdesigns@gmail.com](mailto:raindogdesigns@gmail.com)  
[www.raindogdesigns.com/wordpress](http://www.raindogdesigns.com/wordpress)



### Regeneration Landscaping

(206) 473-0621  
[andrewlong@regenlandscaping.com](mailto:andrewlong@regenlandscaping.com)  
[www.regenlandscaping.com](http://www.regenlandscaping.com)



### Sandstorm Construction

(206) 235-3375  
[quotes@sandstormconstruction.com](mailto:quotes@sandstormconstruction.com)  
[www.sandstormconstruction.com](http://www.sandstormconstruction.com)



### Stone Soup Gardens

(206) 661-7628  
[gardenergnome@gmail.com](mailto:gardenergnome@gmail.com)  
[www.stonesoupgardens.com](http://www.stonesoupgardens.com)



### Sustainable Rain Management

(425) 244-5320  
[ava@sustainableinrainmanagement.com](mailto:ava@sustainableinrainmanagement.com)



### Thriving Garden Design

(206) 326-9732  
[thriving.gardens@gmail.com](mailto:thriving.gardens@gmail.com)  
[www.thriving-garden.com](http://www.thriving-garden.com)



\*Check our website: [700milliongallons.org/rainwise/find-a-contractor/](http://700milliongallons.org/rainwise/find-a-contractor/) for the most up-to-date list of contractors working in your neighborhood.

Updated April 2023

\*\*The City of Seattle, King County, and their outreach consultants are not endorsing any specific business/contractor/vendor or making any representation or warranty regarding their qualifications, products, or workmanship. The City, County, and their outreach consultants disclaim any liability that may be alleged to arise from the work of any business/contractor/vendor on a customer project.



# RainWise in Your Neighborhood

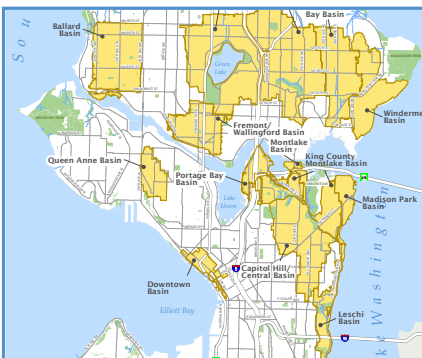
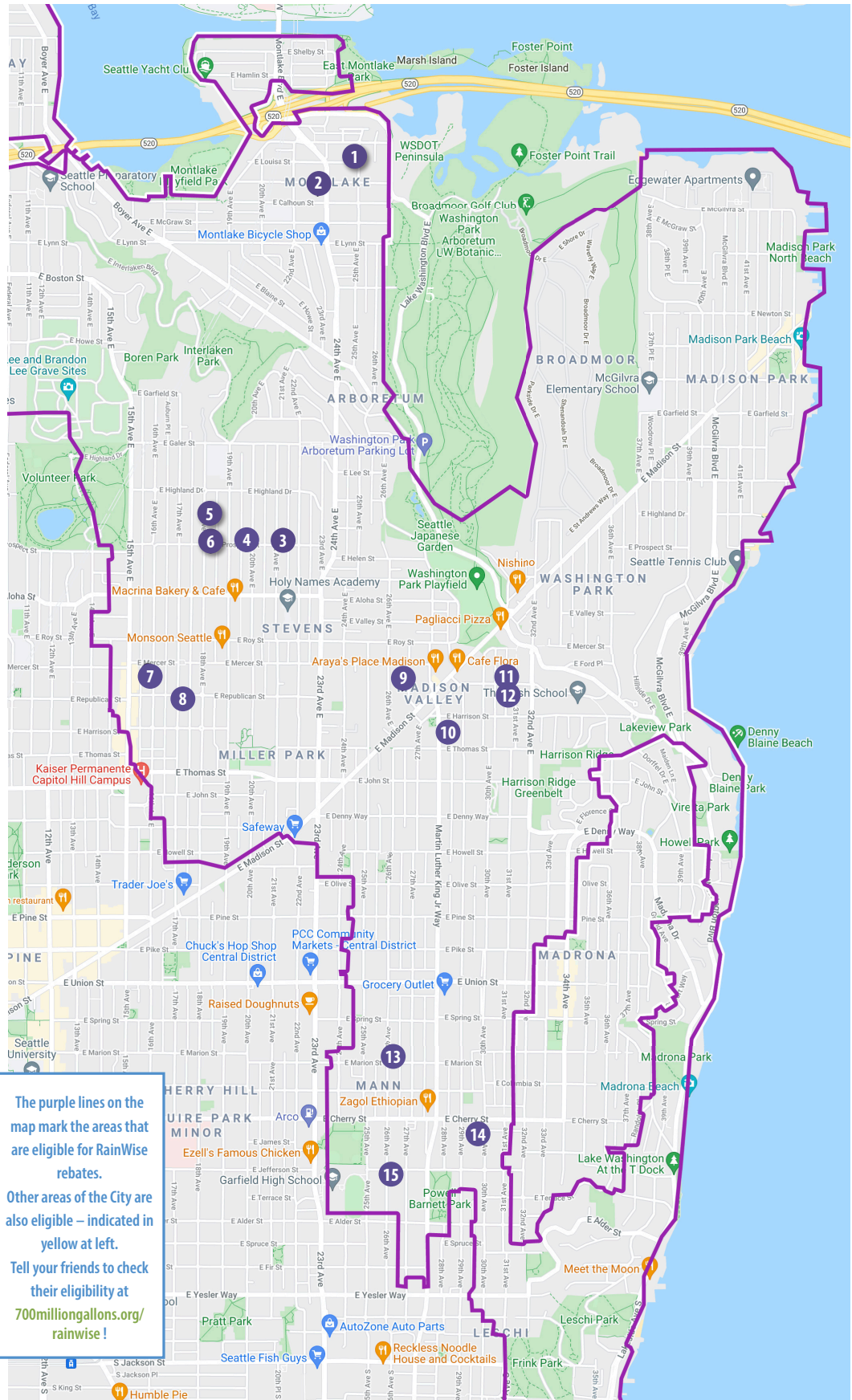
Take a self-guided tour

## Central Seattle is getting RainWise!

Plan an outing to check out some rain garden and cistern installations. These RainWise neighbors have kindly consented to have their properties listed on this map. Please respect their property and observe from the sidewalk only.

1. 2433 E Louisa St ●
2. 2228 E Calhoun St ●
3. 956 21st Ave E ●
4. 1919 E Prospect St (Prospect UCC) ●
5. 1122 18th Ave E ●
6. 948 18th Ave E ●
7. 511-B 16th Ave E ●
8. 420 17th Ave E ●
9. 427 27th Ave E ●
10. 2808 E Thomas St ●
11. 423 31st Ave E ●
12. 417 31st Ave E ●
13. 828 26th Ave ●
14. 531 30th Ave ●
15. 346 26th Ave ●

- = rain garden(s)
- = rain garden(s)+cistern(s)
- = cistern(s)



The purple lines on the map mark the areas that are eligible for RainWise rebates. Other areas of the City are also eligible – indicated in yellow at left. Tell your friends to check their eligibility at [700milliongallons.org/rainwise](http://700milliongallons.org/rainwise)!

For more information, visit [rainwise.seattle.gov](http://rainwise.seattle.gov). Contact us at [rainwise@seattle.gov](mailto:rainwise@seattle.gov).