



Seattle
Public
Utilities



King County

Be RainWise

Manage your rain water at home

What's the problem?

With every storm, rain carries pollutants off our roofs, driveways and other hard surfaces to local creeks, Lake Washington and Puget Sound. During big storms, the sheer volume of this "stormwater" can cause sewer overflows, and erode hillsides and stream banks. Rain gardens and cisterns can help control this stormwater with your help.

Steps to becoming RainWise

Go to www.rainwise.seattle.gov

1. **Check your eligibility** by typing in your address to find out what will work on your property and if you can get a rebate.
2. **Get bids** from trained contractors in the "Find a Contractor" section of the website. Choose your contractor.
3. **Your contractor will schedule a pre-inspection** for approval to build and then install your system.
4. **Your contractor will schedule a final inspection.** A RainWise inspector will confirm that your installation was done properly.
5. **Get your rebate!** Submit your rebate package and receive your rebate within 6-8 weeks.

For more
info visit

www.rainwise.seattle.gov

Questions? Email rainwise@seattle.gov
or call Garden Hotline at 206-633-0224.



RainWise contractors design rain gardens that fit the unique needs of each site.



RainWise REBATES!

RainWise will pay for rain gardens and cisterns

The RainWise program provides rebates that cover most or all of the cost of installing cisterns and rain gardens on your property. To receive a rebate, you must live in an eligible combined sewer overflow basin. We'll help you determine if your property qualifies. **The average rebate has been around \$4,800.**

Cistern, rain garden or both...

How will you be **RainWise?**

How does a RainWise **cistern** work?



A **cistern** is a large, above-ground container used to collect roof water. It is like a huge rain barrel and can hold 200 or more gallons. During the winter, RainWise cisterns collect rain and slowly release it to the sewer system. In the summer, the water can be collected and used for watering.



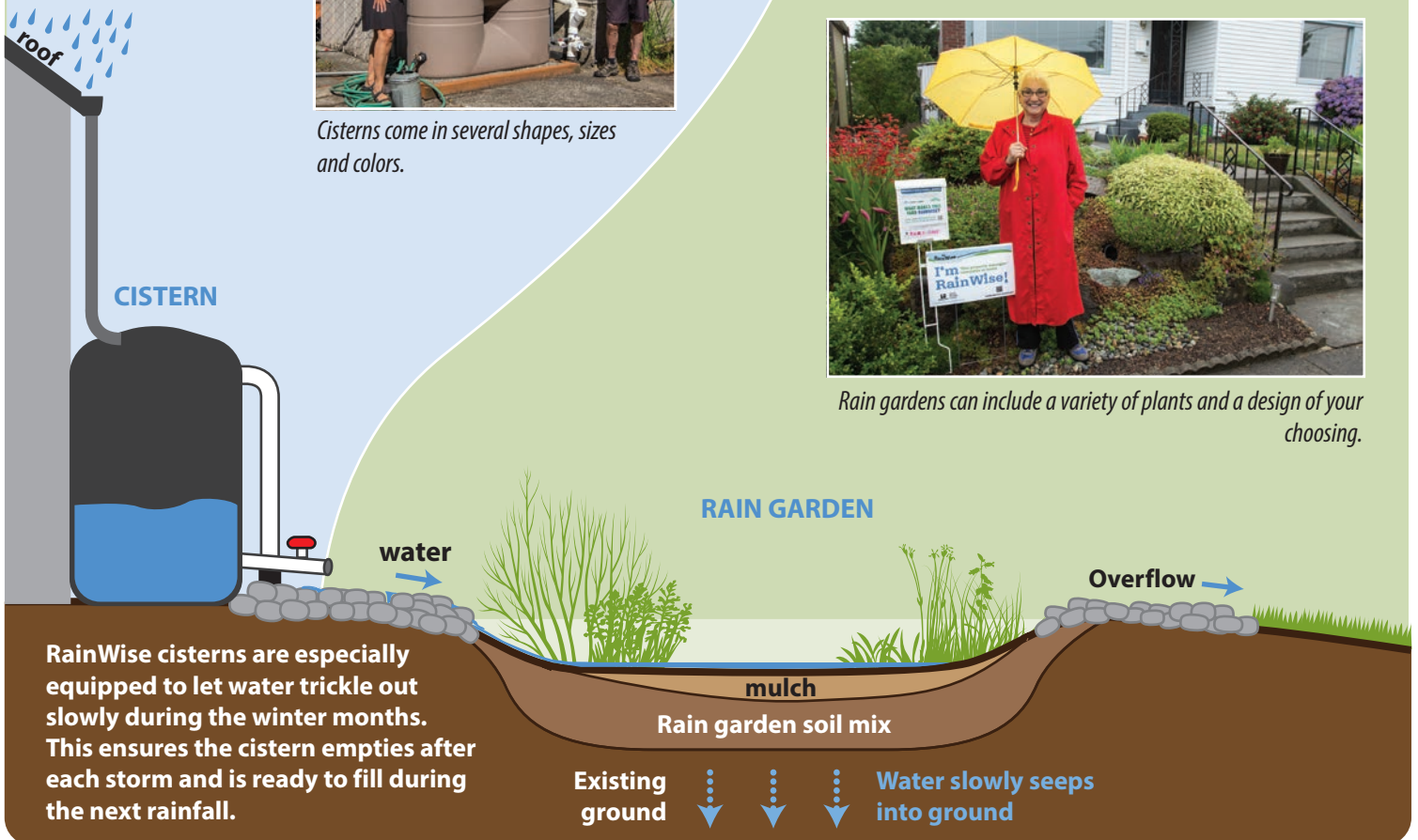
Cisterns come in several shapes, sizes and colors.

How do RainWise **rain gardens** work?

A **rain garden** is a shallow depression containing spongy soil and a variety of plants. It collects water from your roof downspout and allows it to slowly soak into the ground. The soil and plants act as a natural filter, cleaning the water before it enters the ground or a nearby waterway.



Rain gardens can include a variety of plants and a design of your choosing.



A **RainWise** contractor will help you decide which solution will work best on your property, the cost and the amount of your potential rebate.



**Seattle
Public
Utilities**



King County

Working with you to manage stormwater at home.

www.rainwise.seattle.gov